



# THE UMW APPALACHIAN DISTRICT NEWS

4th Quarter 2019

## President:

I cannot believe this year is almost over. I have been honored to serve as your district President these past 4 years. I have enjoyed meeting everyone at all of our events. Remember you still have Leadership Development to attend. I want to encourage everyone to attend your District and Conference events. A lot of planning goes in to these events to make them meaningful for you.

Looking forward to seeing you soon,  
Lorraine



## Vice-President:

Here we are in the 4th quarter of our Appalachian District UMW year. We have had our Prayer Breakfast “Her price is far above rubies”, our Mission Study “Money, money, money” and our Annual Meeting “AHhhhh”. Also, we have our Appalachian District Leadership and Membership Development Day on Saturday, Nov. 2, to look



forward to. All of our local unit officers and mission coordinators are encouraged to attend this event. We need to stay connected. We are like a puzzle. In order for us to fit together and see the whole picture of who we are we must complete the puzzle. The Local Unit is the most important piece of the puzzle. The Local Unit completes the puzzle pieces with the District and the Conference and International UMW. Each piece is important. The local

unit pieces are the local officers, mission coordinators, and members; then we go out from the local unit to broaden our outreach and complete the pieces on the District and Conference levels. We are bound together through faith, hope and love in action. Help us put the puzzle together with each piece in its place so we can experience the complete picture. Please invite your Nurturing Partner to your local unit if you have not done so this year. Also, please make every effort to attend the Leadership and Membership Development Day on November 2 at Millers Creek UMC in Wilkes County. Registration is at 9:30 AM and the session begins at 10:00 AM. Encourage all to be active in this journey of Faith, Hope and Love in Action with United Methodist Women.

The Western North Carolina Conference of UMW is the lead in giving to the Legacy Fund, just as we continue to lead in Giving to Mission. Let us hold to this legacy of giving that we have been given through our foremothers. Let us continue to be strong as we put the pieces of the puzzle in place for the upcoming year of 2020.

This is my last article for the Appalachian District. I begin my studies at Queens University on August 26th. Thank you for your support and love. I am thankful for the time spent serving and working with you. Thank you for the Special Mission Recognition pin I was presented at the Annual meeting in Boone on August 10th. I will wear it humbly and cherish it as I remember you. Your new Vice President for 2020 - 2021 is Annette Echard from New Covenant UMW in Lenoir in Caldwell County. Please welcome her and support her as she serves.

May God’s peace and love abide with you now and in the future.

Prayers and Peace,  
Katie Burns

## Secretary:



Faith, Hope, and Love in Action – UMW. Ahhhh Moments: Celebrating our Accomplishments and our Heritage – the theme for our Appalachian District Annual Celebration. Thank you Boone UMW for such a beautiful setting and for being such wonderful hosts. We enjoyed great food, a wonderful program, and loving fellowship. Martha Efird, our Conference Spiritual Growth Coordinator and our guest speaker, reminded us that “We are the Accomplishment” and challenged us to “Go forward and create the Heritage”. While unit certificates will not be distributed until the Appalachian District Leadership and Membership Development Training at Millers Creek UMC in November, we still celebrated the accomplishments of 18

units as 2018 Mission Today Units, 8 Mission Study Units (units that participated in at least one Mission Study), 7 units with at least one new member in 2018, 9 Justice Today Units, 23 Five Channels of Giving Units, and 40 Reading Program participants. We approved our district budget and elected new district officers. Joanie Strohm, our Conference Vice-President, led a very meaningful officer installation program. As we enter the 4<sup>th</sup> and last quarter of 2019, make sure you have all your unit minutes and records in order to make it easier for your unit officer team to complete end of year reports for 2019 – hopefully we can increase the number of units we celebrate in 2020.

Blessings, Jan Taylor

## Communications:

As I complete four years as your Appalachian District Communications Coordinator, I realize how much I have truly enjoyed serving in this position. I served 21 years in the United States Navy, and one of the first pieces of advice I was given was “don’t raise your hand to volunteer”. I am thankful and blessed that I have learned to ignore that advice. Please join me in welcoming Vanessa Harmon from Broad Street UMW as your new Communications Coordinator. I am confident that Vanessa will do a great job and will be as richly blessed by each of you as I have been. As Sherry mentioned earlier, I too am very appreciative of the Special Mission Recognition pin given to me at our Appalachian District Annual Celebration – just one more reminder of why I love UMW so much – money to mission. Thank you for the unit photos, love and support during these past 4 years – I know you will provide the same love and guidance to Vanessa. Below are few more pictures from our annual celebration – especially take note of the unique way to cut a pineapple (Boone UMW definitely has some cooking/food prep talent!)



## Mission Education and Interpretation:

Greetings to all,

I pray your summer has gone well and it certainly has been really “hot.” I hope the weather hasn’t kept you from doing “mission work.” Never allow things keep you from doing “God’s work.” Whatever “He” has called you to do keep right on going!

I encourage all units within the district to celebrate what the Lord has done for you! Be mission-minded....

Have you considered going to the Mission Response Center and helping out? Let us all do better in these areas where (we) can make a difference.

Thank you all for bringing out the: School kits, Hygiene Kits, and cleaning buckets to our district events.

**M-Motivate**

**i-inspire**

**s-seek**

**s-strive**

**i-ignite**

**o-open**

**n-new**



Please allow just a few of these words to dwell within you. Are (we) on the right track for Mission...

Roberta Walker

## Membership – Nurture – Outreach:

As our year is coming to a close, ask yourselves:

Have I invited someone to my local UMW?

Have I offered a ride to our circle meetings?

Have I gotten in touch with my unit’s district nurturing partner (see nurturing partner list on page 5)?

Fall is the perfect time to reach out to new members. As many units are returning from summer break, what a joyous time to share the love of belonging to a Unit of UMW. Join me in growing each Unit before the end of the year!

Saturday, October 12, is Ubuntu Day of Service (see info on page 4). Let’s reach out and include prospective members, also bring your daughters! Let them see service in action and experience the “Love of God” with us!

Denise Harris

### UBUNTU

**Ubuntu** is a unique word. A Zulu phrase, it can be translated “I am only because we are, and since we are, therefore I am.” Or “I am human because you are human.” It recognizes each human being as part of a community. It moves us to action on behalf of our neighbor. Ubuntu is a celebration of being in community with people as mission.





# UBUNTU

**SATURDAY, OCTOBER 12**

**9:00 AM-2:00 PM**

Bring a bag lunch. Choose to serve at one of the WNCC sites listed below. Serve alongside other United Methodist Women in fellowship and love. Consider inviting a potential member to this event.

**BENNETT COLLEGE - Greensboro**

**PROJECT:** *Serve as greeters and assist with check-in at Fall Open House*

**HANDS-ON MISSION:** *provide personal toiletries for student welcome*

**BETHLEHEM CENTER – Charlotte**

**PROJECT:** *Holiday Stars – cut, string, tag, organize*

*Bring own scissors.*

**Maximum participants = 30**

**HANDS-ON MISSION:** *Classroom supplies from Wish List*

**BETHLEHEM CENTER – Winston-Salem**

**PROJECT:** *outside – planting flowers*

*Inside – paperwork, assembling packets, cleaning shelves/toys, cutting out laminated pictures*

*Bring bulbs, pansies, gardening tools*

**HANDS-ON MISSION:** *classroom supplies of all kinds (especially glue sticks, copy paper), dish towels, cloths, pot holders, gloves*

**BROOKS HOWELL HOME – Asheville**

**PROJECT:** *Outside work (bring work gloves)*

**HANDS-ON MISSION:** *Gift cards to Lowe's, AC Moore, and Target are welcomed.*

**HINTON RURAL LIFE CENTER – Hayesville**

**Saturday, October 26, 9-12**

**Lunch provided!**

**PROJECT:** *Cleaning/organizing special projects, help with fall mailing and other office work, reset poverty simulation, etc.*

**HANDS-ON MISSION:**

**MISSION RESPONSE CENTER – Terrell**

**PROJECT:** *Checking kits*

**Maximum participants = 25**

**HANDS-ON MISSION:** *Any kits accepted*  
**\*Bring lunch or eat nearby**

**PFEIFFER UNIVERSITY – Misenheimer**

**PROJECT:** *Outdoor landscape beautification*

**HANDS-ON MISSION:** *Food staples for Cross Roads Community Connection food pantry*

**UBUNTU – the South African belief in a universal bond of sharing that connects all humanity**

***"I am human because we are human."***

**Registration Link**

<https://wnccumw.org/events/ubuntu-day-of-service-2019/>

## 2019 UMW Appalachian District Nurturing Partners

Church / Unit	Nurturing Partner		Church / Unit	Nurturing Partner
Arbor Grove	Jan Taylor		Hudson	Lorraine Burns
Banner Elk	Sherry Summerlin		Jefferson	Jan Taylor
Barbara Heck	Roberta Walker		Littlejohn	Katie Burns
Baton	Margo Bowman		Maple Springs	Jan Taylor
Bethelview	Pamela Reid		Millers Creek	Jan Taylor
Bethlehem	Linda Greer		Monticello	Linda Greer
Boone	Jan Taylor		Mount Bethel (Hickory)	Sherry Summerlin
Broad Street	Linda Greer		Mount Hermon	Sherry Summerlin
Calvary	Nikki Vance		Mount Zion (Lenoir)	Margo Bowman
Charity (Elkin)	Donna Parks Hill		Mountain View	Nikki Vance
Chestnut Hill	Nikki Vance		New Covenant	Margo Bowman
Christ Boulevard	Brenda Kimberlin		Pine Grove	Kimberly Witherspoon
Clifton	Nancy Reigel		Piney Creek	Donna Parks Hill
Colliers	Katie Burns		Pisgah (Hiddenite)	Beverly Curtis
Cool Spring	Micki Earp		Providence	Denise Harris
Cox's Chapel	Beverlee Scott		Scott's Chapel	Katie Burns
Deerfield	Roberta Walker		Shiloh (Sparta)	Beverlee Scott
Ebenezer (Granite Falls)	Lorraine Burns		Smethport	Brenda Kimberlin
First (Elkin)	Beverlee Scott		Snow Creek	Terri Williams
First (Granite Falls)	Beverly Curtis		Sparta	Pamela Reid
First (Jonesville)	Pamela Reid		Stony Point	Nancy Johnson
First (North Wilkesboro)	Jan Taylor		Temple Hill	Judy Sipe
First (Taylorville)	Sherry Summerlin		Union Grove	Penny Ledbetter
Friendship (Statesville)	Beverly Curtis		Warrensville	Denise Harris
Gamewell	Lorraine Burns		Wesley Chapel (Hamptonville)	Roberta Walker
Grace Chapel	Sherry Summerlin		Wesley Memorial	Denise Harris
Grassy Creek (State Road)	Denise Harris		Wesley's Chapel (Elkin)	Nancy Johnson
Harper's Chapel (Patterson) NC	Margo Bowman		West Jefferson	Donna Parks Hill
Hiddenite	Nancy Johnson		Wilkesboro	Lorraine Burns

### 2019 Appalachian District United Methodist Women Officers

<b>President</b>	Lorraine Burns	PO Box 473	Granite Falls, NC 28630	Granite Falls First	828-396-1259 h 828-612-7418 c	lorraineburns@gmail.com
<b>Vice President</b>	Katie Burns	33 Meandering Way	Granite Falls, NC 28630	Hudson	828-446-5962	katie.burns2019@gmail.com
<b>Secretary</b>	Jan Taylor	580 Waddell Road	Roaring River, NC 28669	Wilkesboro	336-957-3024 h 336-468-0313 c	j.kay.tay@gmail.com
<b>Treasurer</b>	Nancy Johnson	661 Teague Town Rd.	Taylorsville NC 28681	Mt. Bethel, Alexander	828-612-6142	nananurse85@charter.net
<b>Spiritual Growth</b>	Sherry Summerlin	120 Shady Oak Terrace	Hudson, NC 28638	Hudson	828-728-4936 h 828-234-0850 c	stopac69@gmail.com
<b>Mission Education &amp; Interpretation</b>	Roberta Walker	192 Oak Grove Rd	Elkin, NC 28621	Wesley Chapel	336-835-1939	r_walker1961@yahoo.com
<b>Membership Nurture &amp; Outreach</b>	Denise Harris	2606 Fines Creek Dr.	Statesville, NC 28625	Broad Street UMC	704-871-9219 h 704-437-2794 c	denise.harris2105@gmail.com
<b>Social Action</b>	Donna Parks Hill	350 Sedgefield Circle	Wilkesboro, NC 28697	Roaring River UMW	336-466-1230	dmarie@embarqmail.com
<b>Communications</b>	Jan Taylor	580 Waddell Road	Roaring River, NC 28669	Wilkesboro	336-957-3024 h 336-468-0313 c	j.kay.tay@gmail.com
<b>Program Resources</b>	Micki Earp	267 Devonshire Rd.	Taylorsville NC 28681	Stony Point UMC	828-632-6769	13micki@gmail.com
<b>Nominations Co-Chair</b>	Brenda Kimberlin	4028 Meadow Circle	Lenoir, NC 28645	Little John UMC	828-728-0371	bkimberlin@caldwellschools.com
<b>Nominations Co-Chair</b>	Penny Ledbetter	324 Mosswood	Olin, NC 28660	Union Grove UMC	704-539-5353	pennygrietje@gmail.com
<b>Nominations Committee - 2019</b>	Pamela Reid	527 Arlington Circle NW	Lenoir, NC 28645	New Covenant UMC	828-754-4426	preidnc@yahoo.com
<b>Nominations Committee - 2019</b>	Nikki Vance	3203 Sheeley Road	Lenoir, NC 28645	Little John UMC	828-758-7683 h 828-729-4212 c	
<b>Nominations Committee - 2020</b>	Kimberly Witherspoon	917 Sunrise Circle	Lenoir, NC 28645	New Covenant UMC	828-729-0876	kwitherspoon03@yahoo.com
<b>Nominations Committee - 2020</b>	Judy Sipe	494 B & S Lane	Hickory, NC 28601	Mt. Bethel (Bethlehem) UMC	828-612-1519	jsipe12@gmail.com
<b>Nominations Committee - 2020</b>	Terri Williams	417 Cedarbrook Rd	Jonesville, NC 28642	First Jonesville UMC	336-426-2250	simplyme3075@yahoo.com
<b>Parliamentarian</b>	Margo Bowman	4899 Kistler Lane	Granite Falls, NC 28630	Grace Chapel UMC	828-396-7852 h 828-499-0077 c	margocfs@hotmail.com
<b>Historian</b>	Beverly Curtis	4613 Ike Starnes Road	Granite Falls, NC 28630	Grace Chapel UMC	828-291-2986 c	bmmcurtis@gmail.com
<b>Legacy Energizer</b>	Beverlee Scott	1260 Memorial Park Drive	Sparta, NC 28675	Sparta	336-372-4876 h	bevscott@skybest.com
<b>Conference Officers</b>						
<b>Conference Liaison</b>	Nancy Reigel	375 Troy Norris Rd.	Boone, NC 28607	Boone	828-268-0637	nancy@reigelridge.com
	Linda Greer	3201 Mt. Wesley Church Rd	Stony Point, NC 28678	First Taylorsville	704-585-6263 h 828-244-2251 c	jacklindagreer@bellsouth.net

## Social Action:

Greetings, my fellow UMW!

As children start back to school, I feel it necessary to bring up the topic of The School-to-prison Pipeline. The School-to-prison Pipeline is a term describing how children and youth of color are rerouted by systems and institutions and funneled away from educational success towards the criminal justice system.

- African American students are three times more likely than white students to be suspended and expelled. 12 percent of African American girls are suspended, compared to 2 percent of white girls. Native American students are less than 1 percent of the student population, but comprise 3 percent of students experiencing expulsion and 2 percent of students suspended out of school.
- Native American youth are held in juvenile detention facilities at three times the rate of white youth.
- 31 percent of students experiencing school-based arrests are African American, though African American children and youth make up only 16 percent of total school enrollment.

The school-to-prison pipeline is not the result of any one single action, but of many factors coming together, including:

- **Implicit Racial and Gender Biases.** Many people wrongly assume that children and youth of color are more frequently disciplined and/or arrested because they commit more crimes than their white peers. In fact, children and youth of color do not misbehave more frequently; they are simply treated more harshly for similar or lesser offenses. Implicit bias skews the perception and judgment of adult decision makers. Often unintentional and unconscious, it causes people to perceive and respond to the same behavior differently, based on the race and gender of the child. It impacts teachers, principals, school resource officers, police, lawyers, judges and others making decisions about school discipline, arrests and sentencing.
- **Excessive Out-of-school Suspensions and Expulsions.** Even if a student is not directly arrested on school grounds or referred to the courts, excessive and unnecessary out-of-school suspensions and expulsions hurt students. They miss out on necessary classroom instruction and are far more likely to drop out or end up in the criminal justice system.
- **Zero Tolerance Policies.** Zero tolerance policies have expanded to include a wide array of less serious offenses, resulting in mandated suspensions, expulsions and arrests for minor misconduct. As part of zero tolerance, many schools now employ school resource officers— police stationed inside schools.
- **Status Offenses.** Children and youth can also be brought into the justice system for “status offense violations.” Status offenses are behaviors that would not be crimes if committed by adults. Common examples are running away from home, skipping school, missing curfew or underage drinking. This uniquely impacts girls, because of gender bias, heightened vulnerability to sexual and domestic abuse, and other factors.

Together, United Methodist Women Can Interrupt the Pipeline The situation is bleak. Gifted, cherished young people are disappeared into the school-to-prison pipeline. However, as women of faith we know that God has more in store for us. God promises “reward for your work” and “hope for your future.” Rachel will not have to weep forever.

As United Methodist Women, we will continue to grow our missional leadership skills working as school-to-prison pipeline interrupters to build a better future for children and youth.

- **Educate yourself.** Share what you learn with your family, your local unit and your church.
- **Bring your gifts to the table** and join an existing local effort. Some cities and towns already have active, community-based campaigns underway to interrupt the school-to-prison pipeline.
- **If there is not yet an effort in your local community,** prayerfully consider whether God is calling you to be the spark that gets the fire going. Convene a team of leaders and thought partners in your area. Include other United Methodist Women and invite other mothers, educators and youth. Assess the dynamics and needs of your community. Talk to key decision makers, especially principals, school superintendents and boards of education. Teach them how the school-to-prison pipeline hurts children. Show them solutions and alternatives.

- Support youth leaders in your community. Too often, the voices of children and youth of color are dismissed and ignored. Seek to teach and learn from young people in your community. Ask good questions, listen and take their stories to heart.

## School-to-Prison Pipeline Bible Study

There is six-part curriculum to study with your group. Go to <https://www.unitedmethodistwomen.org/what-we-do/service-and-advocacy/mission-focus-issues/racial-justice-and-mass-incarceration/reflections> to find out more.

### Reflections on Racial Justice

*"From one ancestor he made all the nations to inhabit the whole earth."*  
-Acts 17:22

### From the United Methodist Book of Discipline

"We recognize racism as sin and affirm the ultimate and temporal worth of all persons. We rejoice in the gifts that particular ethnic histories and cultures bring to our total life. We commend and encourage the self-awareness of all racial and ethnic groups and oppressed people that leads them to demand their just and equal rights as members of society." (Social Principles, ¶ 162 B)

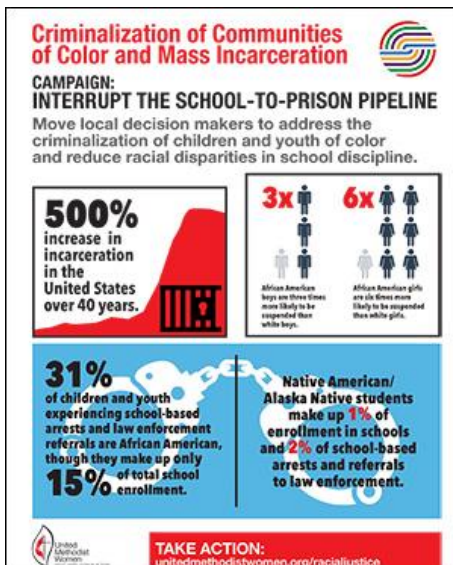
### Our Values

Racial justice is an ongoing focus of United Methodist Women mission work. We conduct regular racial justice workshops with members, and work in coalition with human and civil rights groups to track hate-crimes and to promote racial justice in the United States and the world.

United Methodist Women's Charter for Racial Justice was created and adopted by the Women's Division in 1978 and successfully adopted by the whole denomination in 1980. General Conference has consecutively readopted it, every eight years since, most recently in 2008. The Charter continues our urgent call for study and action on the principles and goals of its vision.

**Scriptural Focus** - Thus says the Lord: A voice is heard in Ramah, lamentation and bitter weeping. Rachel is weeping for her children; she refuses to be comforted for her children, because they are no more. Thus says the Lord: Keep your voice from weeping, and your eyes from tears; for there is a reward for your work, says the Lord: they shall come back from the land of the enemy; there is hope for your future, says the Lord: your children shall come back to their own country. (Jeremiah 31:15-17, see also Matthew 2:18)

...but Jesus said, "Let the little children come to me, and do not stop them; for it is to such as these that the kingdom of heaven belongs." (Matthew 19:14)



Source: <https://www.unitedmethodistwomen.org/racial-justice/school-to-prison-pipeline>;  
<https://www.unitedmethodistwomen.org/racialjustice/school2prisonpdf.pdf>

Also, September is Recovery Month, for those in recovery of substance-use disorder. Please check here <https://recoverymonth.gov/events/find-events> for recovery events in your area. Please support those in recovery so that they can be more confident in speaking out and being "The Faces and Voices of Recovery". People DO recover!

Peace and Blessings,  
Donna Parks Hill



## Spiritual Growth:

Hello my dear Sisters in Christ,

As I write this article, I feel humbled and blessed to have had this opportunity to serve you as the Spiritual Growth Mission Coordinator. It has been a true learning experience for me to serve. I have grown in understanding just who we are as United Methodist Women. I continue to learn and I am ever amazed at the wealth of knowledge my sisters in UMW have to share with and through their faith and their work and service through United Methodist Women. Mission Coordinator for Spiritual Growth is truly one of the most rewarding ways to serve. It is challenging and inspiring.

I welcome Judy Sipe as our 2020-2021 Spiritual Growth Appalachian UMW Mission Coordinator. Judy and I worked together when her church, Mt. Bethel located in Bethlehem, hosted the Prayer Breakfast. She is amazing. The Appalachian District is truly in store for an exciting spiritual journey with Judy.

I so appreciate the Special Mission Recognition pin given to me on August 10th at the Boone UMC. Money to mission always makes me happy. Being a part of UMW always keeps me aware of the world and the needs of others and being with each UMW sister is a true blessing. I am honored to serve.

Thank you to the Boone UMW for hosting the Annual Meeting for the Appalachian District.

In closing, thank you for your love and support. I continue to pray for you, with you, and for the ever present Holy Spirit to fill us all with Hope, Faith and Love putting into Action that to which we are each called.

Now, may the peace of God be with you, guide you and protect you!

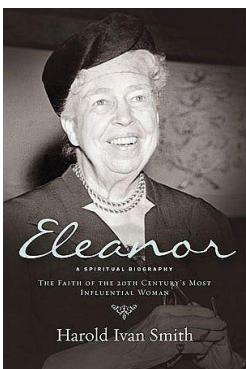
Much love,  
Sherry Summerlin



## Program Resources:

Very soon, we will all need to turn in our yearly report. I hope that your unit has increased their reading this year. If you remember, I gave each unit the challenge to raise the number of members achieving a reading certificate.

Please remember that many of our books are available on Kindle. I have even found a few that were free because I have the Kindle Unlimited. There is also an Audible component to Kindle that allows you to pay one fee for the year. If you are computer savvy this is a wonderful way to read our books.



I just finished reading "Eleanor, A spiritual biography". I am an avid historical and historical fiction reader so this book was a pleasure to read. I copied many of her quotes to my journal. She was a big advocate of equality. One of her quotes was, "If God did not condemn, why should humans?" She also said that "The value of a faith should be measured in how one lives." Let us live our lives so that we show great value to others.

Remember the exchange program when you go to the Leadership and Membership Development training at Millers Creek UMC on November 2nd. Bring the books that your unit has read and pick up some from others. This is a nice way to save some money, and help other units out.

Please read, report to your local unit and enjoy your faith through the written word. If you need help with the new ordering system, please feel free to contact me.

Micki Earp

## **Treasurer:**

Greetings to my Sisters in Christ!

This is the last Appalachian District Newsletter for 2019 and also the beginning of the last quarter of Mission Giving for 2019. Mission Giving is just not about money; it is also the giving of your prayers and your time. Giving of your time is a good way to support local missions. I have been asked many times why I go to other countries on Mission Trip when so many people in the United States (US) need help. My answer is, people in need here in the US have many available resources where they can get help, while in other countries those resources are not available. I have seen UMW Mission projects in action here in the US and in other countries. Local Unit Treasurers, I urge you to encourage your unit to meet their Pledge to Mission for 2019 so the UMW can continue to work on behalf of women, children and youth all around the world. If your unit has not made a pledge, it is not too late. If you do not have the pledge form I mailed with the first quarter treasurer letter, just write it on a note, on the remittance form, or email the pledge. Just make a pledge! Making and meeting a pledge is possibly the most powerful action we take in support of the Mission of United Methodist Women.

The Love Offering received at the Appalachian District Annual Meeting was a Gift to Mission in honor of all women who have given us our "AH moments" for 150 years was \$269.97. This money will go toward the District Pledge to Mission.

Mark your calendars to attend the Leadership and Membership Development Training on November 2nd at Millers Creek United Methodist Church. A breakout session just for Treasurers will be offered. During this session all new and returning local unit treasurers will receive a folder with forms and helpful tips. Everything you need to know about the record keeping for your local unit will be reviewed and we will talk about the Treasurer's role in promoting the UMW missions in our communities and around the world. Returning treasurers, please come and share your insights and helpful tips with new treasurers. ALL treasurers, new and returning, please come to this training, bring your questions, suggestions, and concerns.

In His Service,  
Nancy Johnson

## **From your Appalachian District Legacy Fund Energizer:**



**Appalachian District Rocks for Legacy!!**



Appalachian District Legacy Fund energizer, Beverlee Scott rocks at the Conference Spiritual Growth Retreat at Lake Junaluska to raise funds for the Legacy fund.

To learn more, contact Nancy Reigel, 828-268-0637.

## Nominations

Greetings to my UMW Sisters,

I hope you had a wonderful summer. I got to spend 9 days in Alaska with my sister and daughters, so I was unable to attend the District Annual Meeting. Although I missed seeing my UMW sisters, I enjoyed spending time with my family and was blessed by the glorious beauty of God's creation. It was truly inspiring. I have also been inspired by the dedication of my UMW sisters and their willingness to serve. If you have answered the call to serve UMW in a new position or just want to learn more about the current position you serve in I invite you to attend the District Leadership and Membership Development Day on Saturday, November 2nd. I hope to see you there.

Blessings,  
Brenda Kimberlin

### District Officer Slate for 2020

Office	Name	Term
President	Sherry Summerlin	2020-2021 (1 <sup>st</sup> term)
Vice-President	Annette Echard	2020-2021 (1 <sup>st</sup> term)
Secretary	Jan Taylor	2019-2020 (2 <sup>nd</sup> term)
Treasurer	Nancy Johnson	2020-2021 (2 <sup>nd</sup> term)
Spiritual Growth	Judy Sipe	2020-2021 (1 <sup>st</sup> term)
Mission Education & Interpretation	Roberta Walker	2019-2020 (2 <sup>nd</sup> term)
Membership Nurture & Outreach	Denise Harris	2019-2020 (2nd term)
Social Action	Donna Parks Hill	2019-2020 (2nd term)
Communications	Vanessa Harmon	2020-2021 (1st term)
Program Resources	Micki Earp	2020-2021 (2nd term)
Co-Nominations Chair	Brenda Kimberlin	2020-2021 (2nd term)
Co-Nominations Chair	Penny Ledbetter	2019-2020 (1st term)
Nominations Committee 2020	Kimberlee Witherspoon	2019-2020
Nominations Committee 2020	Terri Williams	2019-2020
Nominations Committee 2021	Sherry Mabry	2020 - 2021
Nominations Committee 2021	Micki Earp	2020 - 2021
Nominations Committee 2022	Pamela Harshaw	2020 - 2022
At Large	Lori McKay	2020 - 2021



## Appalachian District Leadership and Membership Development Training

**Location:** Millers Creek UMC  
3260 N NC Highway 16  
Millers Creek, NC 28651

**When:** Saturday, November 2, 2019  
Registration: 9:30 – 10:00 a.m.  
Training: 10:00 a.m. – 12 noon



**Hands on Mission: UMCOR School Kits (see new material and kit instructions below)**

- **Kit Materials:** One pair blunt scissors (round-tip only; no plastic scissors); one box of 24 crayons (only 24-count boxes are accepted); three one-subject notebooks (no marble composition books; no 3 or 5-subject notebooks); one pack of loose-leaf paper (100-200 page packers are acceptable; wide or college rule accepted); one hand-held pencil sharpener (1-inch or longer; remove from packaging); one ruler (12 inches or 30 centimeters long; sturdy or flexible material accepted); six unsharpened pencils; one eraser (two inches or larger); one two-gallon re-sealable plastic bag
- **Assembly Directions:** stack all paper items on top of each other: Place all loose items on top of paper. Place kit inside of re-sealable (Ziploc-type) bag and seal.

**NOTE:** Contents or the containers of kits should not be imprinted with cartoon characters, advertisements, religious, patriotic, military or camouflage symbols; please include a check or cash for \$1 per kit to cover shipping costs in a separate envelope. Go to [www.umcor.org](http://www.umcor.org) for additional information.

**Directions:**

**From Boone and West**

Take US 421 S to NC-16. Turn left on NC-16. In approx. 3 miles, arrive at Millers Creek UMC on the right.

**From Sparta and North**

Take US-21 toward NC-18; turn right onto NC-18. In approx. 28 miles, turn right onto Mountain Valley Church Rd for approx. 3.2 miles. Turn right onto Pleasant Home Church Rd and in 1.3 miles turn left on NC-16. In approximately 1.2 miles, arrive at Millers Creek UMC on the left.

**From Statesville and South**

Take NC115 toward Wilkesboro; in approx. 31 miles, take ramp right onto US-421 N (toward Boone). In approx. 7.8 miles, turn right onto NC-16 and in approx. 3 miles, arrive at Millers Creek UMC on the right.

**From Hickory, Taylorsville**

Take NC-16 to US-421 N (left ramp toward Boone). In approx. 4.3 miles, turn right onto NC-16. In approx. 3 miles, arrive at Millers Creek UMC on the right.

**From Granite Falls, Lenoir**

Take NC-18 out of Lenoir toward Wilkesboro; in 22 miles, turn left onto NC-16. In 3 miles, take left ramp for US-421 (toward Boone). In approx. 4.3 miles, turn right onto NC-16. In approx. 3 miles, arrive at Millers Creek UMC on the right.

**From Elkin, Jonesville and East**

Take I-77 South to US 421 toward Wilkesboro/Boone (Exit 73B). Take US 421 to NC-16 (approx. 25 miles). Turn right on NC 16 and in approx. 3 miles, arrive at Millers Creek UMC on the right.